

Art of **3D** Technology

Uncompromising and leading solutions



# KY8030-3

World-Fastest Full 3D Solder Paste Inspection

- ✓ No.1 3D SPI in the market
- ✓ The strongest printing process optimization tool
- ✓ The world's best measurement accuracy and reliability



Real Time Warp Compensation



User-friendly Software



3D Data Based SMT Process Control System



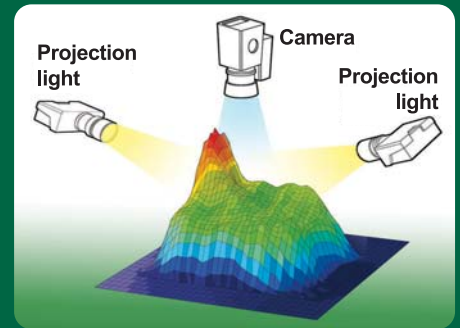
# KY8030-3

World-Fastest Full 3D Solder Paste Inspection



High Speed for Maximum Throughput Optional

Achieving industry leading inspection speed at 0.24sec/FOV



## ➤ Dual Projection Technology

KY8030-3 delivers true 3D inspection without concern for inaccuracies resulting from shadowing.



## Warp Compensation Solution Optional

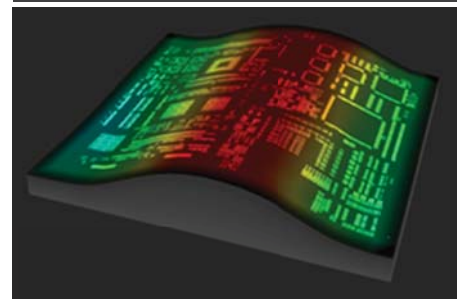
### ○ Z-tracking 3D Compensation Solution

- Koh Young's **Multi-Frequency Moiré Technology** applied \*Patented
- Real time measurement and compensation of board warp, with respect to the ideal plane
- Real time online provision of high quality PCB images with measurement data

### ○ Pad Referencing 2D Compensation Solution

- Automatic reference teaching by using high quality IR light
- Real time matching of the PCB pad locations with the ideal PCB stencil design as defined by the CAD file

PCB Warp 3D Display



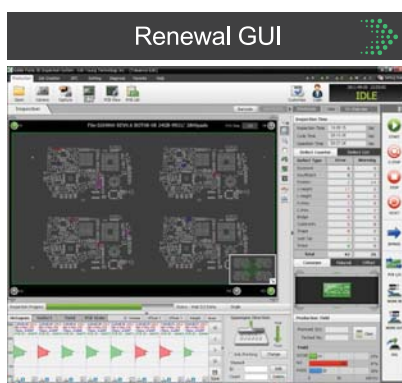
Before Warp Compensation

After Warp Compensation



## User-friendly Renewal GUI

- Optimized display for the user with smart menu groupings
- Supports user's defect readability and system usability by more intuitive software
- Detects a wide range of defects using real images and 3D data

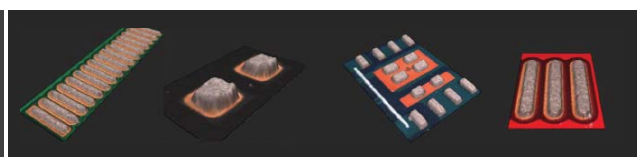


Real Color 3D Image

Optional

Foreign Material Inspection

Optional



Dust

Hair

Capacitor

PCB Bury

Solder Ball

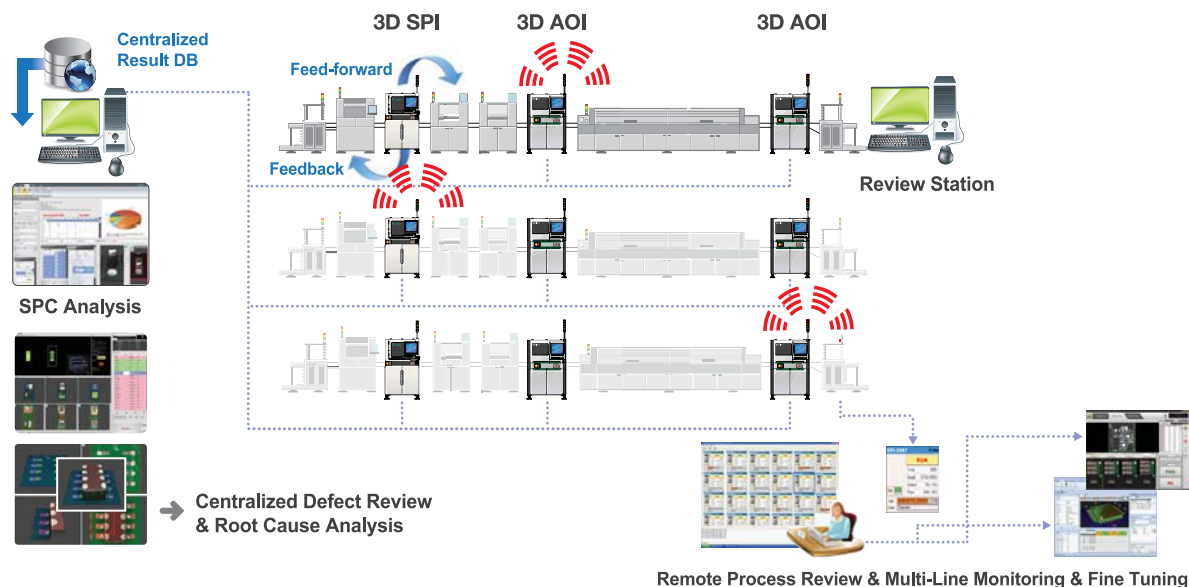
Resistor





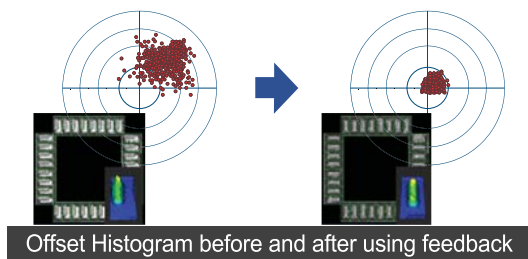
# 3D Data based SMT Process Control System

## o Koh Young's KSMART Solution



## Closed Loop Real Time Screen Printer Communication

Optional

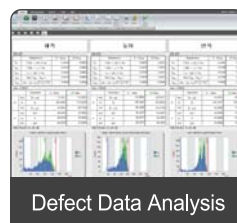
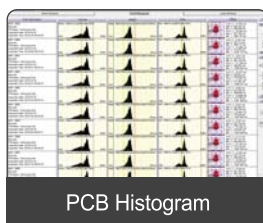


- Real time communication of printing process monitoring data with screen printers
- Result reporting after optimization by Koh Young's SPC software
- Real time communication of pick-and-place process monitoring data with mounters
- Supports process optimization by controlling panels containing defects

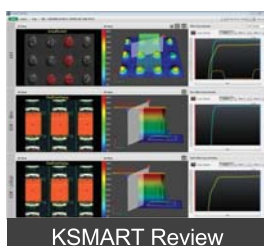
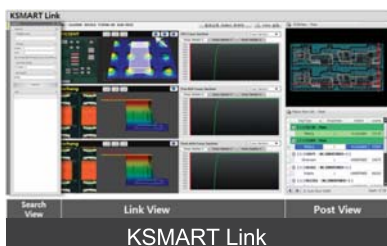


## SPC Plus Printing Process Optimization Tool

- Review, diagnosis and optimization of printing, pick-and-place and reflow processes
- 3D data based SPI-AOI communication solution
- Traces root cause of defects by storing and communicating inspection results from Koh Young's 3D SPI and 3D AOI Systems



## KSMART Link Communication Solution



- Provides intuitive statistical process analysis data by using reliable 3D measurement data
- Communicates with a wide range of production management systems

# Must-check Requirements of 3D SPI System



| Requirements  | Solutions   |                         |                         |      |      |                   |                         |                         |                         |          |   |  |  |                          |   |  |  |                        |                   |                   |                   |                                     |  |  |  |        |   |  |  |              |  |  |  |              |   |  |  |  |  |  |  |               |  |  |  |   |   |  |  |                      |   |  |  |                        |   |  |  |                            |  |  |  |                                |  |  |  |              |  |          |   |                  |  |
|---|---|-------------------------|-------------------------|------|------|-------------------|-------------------------|-------------------------|-------------------------|----------|---|--|--|--------------------------|---|--|--|------------------------|-------------------|-------------------|-------------------|-------------------------------------|--|--|--|--------|---|--|--|--------------|--|--|--|--------------|---|--|--|--|--|--|--|---------------|--|--|--|---|---|--|--|----------------------|---|--|--|------------------------|---|--|--|----------------------------|--|--|--|--------------------------------|--|--|--|--------------|--|----------|---|------------------|--|
| Solution to Shadow Problem                          | • 3D Shadow Free Moiré Technology & Dual Projection   |                         |                         |      |      |                   |                         |                         |                         |          |   |  |  |                          |   |  |  |                        |                   |                   |                   |                                     |  |  |  |        |   |  |  |              |  |  |  |              |   |  |  |  |  |  |  |               |  |  |  |   |   |  |  |                      |   |  |  |                        |   |  |  |                            |  |  |  |                                |  |  |  |              |  |          |   |                  |  |
| Real Time PCB Warp Compensation (2D+3D Solution)    | • Warp Compensation (Pad Referencing + Z-tracking)  |                         |                         |      |      |                   |                         |                         |                         |          |   |  |  |                          |   |  |  |                        |                   |                   |                   |                                     |  |  |  |        |   |  |  |              |  |  |  |              |   |  |  |  |  |  |  |               |  |  |  |   |   |  |  |                      |   |  |  |                        |   |  |  |                            |  |  |  |                                |  |  |  |              |  |          |   |                  |  |
| Operator User-friendliness                          | • Renewal GUI, Real Color 3D Image  |                         |                         |      |      |                   |                         |                         |                         |          |   |  |  |                          |   |  |  |                        |                   |                   |                   |                                     |  |  |  |        |   |  |  |              |  |  |  |              |   |  |  |  |  |  |  |               |  |  |  |   |   |  |  |                      |   |  |  |                        |   |  |  |                            |  |  |  |                                |  |  |  |              |  |          |   |                  |  |
| Inspection Range                                    | • Up to 2mm(optional)   |                         |                         |      |      |                   |                         |                         |                         |          |   |  |  |                          |   |  |  |                        |                   |                   |                   |                                     |  |  |  |        |   |  |  |              |  |  |  |              |   |  |  |  |  |  |  |               |  |  |  |   |   |  |  |                      |   |  |  |                        |   |  |  |                            |  |  |  |                                |  |  |  |              |  |          |   |                  |  |
| Foreign Material Inspection                         | • 3D Foreign Material Inspection (optional)   |                         |                         |      |      |                   |                         |                         |                         |          |   |  |  |                          |   |  |  |                        |                   |                   |                   |                                     |  |  |  |        |   |  |  |              |  |  |  |              |   |  |  |  |  |  |  |               |  |  |  |   |   |  |  |                      |   |  |  |                        |   |  |  |                            |  |  |  |                                |  |  |  |              |  |          |   |                  |  |
| Inspection Items                                    | <ul style="list-style-type: none"> <li>• Volume, Area, Height, Offset, Bridging, Shape Deformity, Coplanarity</li> <li>• Insufficient/Excessive/Missing Paste, Bridging, Shape Deformity, Paste Offset, Coplanarity</li> </ul>  |                         |                         |      |      |                   |                         |                         |                         |          |   |  |  |                          |   |  |  |                        |                   |                   |                   |                                     |  |  |  |        |   |  |  |              |  |  |  |              |   |  |  |  |  |  |  |               |  |  |  |   |   |  |  |                      |   |  |  |                        |   |  |  |                            |  |  |  |                                |  |  |  |              |  |          |   |                  |  |
| Inspection Performance                              | <table border="1"> <thead> <tr> <th></th> <th>10µm</th> <th>15µm</th> <th>20µm</th> </tr> </thead> <tbody> <tr> <td>Camera Resolution</td> <td>20×20mm(0.79×0.79 inch)</td> <td>30×30mm(1.18×1.18 inch)</td> <td>40×40mm(1.57×1.57 inch)</td> </tr> <tr> <td>FOV Size</td> <td colspan="3">13.7~43.5 cm<sup>2</sup>/sec (Inspection speed varies by PCB and inspection condition.)</td> </tr> <tr> <td>Full 3D Inspection Speed</td> <td colspan="3">16.2~50.8 cm<sup>2</sup>/sec (Inspection speed varies by PCB and inspection condition.)</td> </tr> <tr> <td>With High Speed Option</td> <td>100µm (3.94 mils)</td> <td>150µm (5.91 mils)</td> <td>200µm (7.87 mils)</td> </tr> <tr> <td>Min. Distance between Paste Deposit</td> <td colspan="3"> <ul style="list-style-type: none"> <li>• 4M Pixel Camera</li> <li>• IR-RGB LED Dome Styled Illumination</li> <li>• 0.37µm</li> <li>• 1µm</li> <li>• 2.5 nano meter (PZT Accuracy)</li> <li>• &lt; 10% at 6σ</li> </ul> </td> </tr> <tr> <td>Camera</td> <td colspan="3"> <ul style="list-style-type: none"> <li>• 10×10mm</li> <li>• 400µm (2mm optional)</li> <li>• 100µm (150µm paste height)</li> <li>• Possible</li> </ul> </td> </tr> <tr> <td>Illumination</td> <td colspan="3"> <ul style="list-style-type: none"> <li>• 0.39×0.39 inch</li> <li>• 15.75 mils (78.74 mils optional)</li> <li>• 3.94 mils (5.91 mils paste height)</li> </ul> </td> </tr> <tr> <td>Z Resolution</td> <td colspan="3"> <ul style="list-style-type: none"> <li>• Automatic</li> <li>• Front / Rear Fixed (factory setting)</li> </ul> </td> </tr> <tr> <td>Height Accuracy (on KY Calibration Target)</td> <td colspan="3"> <ul style="list-style-type: none"> <li>• Gerber data (274X, 274D), ODB++ (optional)</li> <li>• ePM-SPI</li> <li>• SPC Plus:                             <ul style="list-style-type: none"> <li>- Histogram, X-bar &amp; R-Chart, X-bar &amp; S-Chart, Cp &amp; Cpk, %Gage R&amp;R</li> <li>- Real Time SPC &amp; Multiple Display</li> <li>- SPC Alarm</li> </ul> </li> <li>• KSMART Remote Monitoring System</li> <li>• Library Station: Size Dependent Library for Inspection Condition Setting</li> <li>• KYCal: Auto Camera Calibration, Auto Illumination Calibration, Auto Height Calibration</li> </ul> </td> </tr> <tr> <td>X, Y Accuracy</td> <td colspan="3"> <ul style="list-style-type: none"> <li>• Windows 7 Ultimate 64bit</li> </ul> </td> </tr> <tr> <td>01005 Inspection Capacity Gage R&amp;R (±50% tolerance)</td> <td colspan="3"> <ul style="list-style-type: none"> <li>• KSMART Remote Monitoring System</li> <li>• Warp Compensation</li> <li>• Foreign Material Inspection</li> <li>• Review Station</li> <li>• Closed Loop</li> <li>• Real Color 3D Image Display</li> </ul> </td> </tr> <tr> <td>Max. Inspection Size</td> <td colspan="3"> <ul style="list-style-type: none"> <li>• 10×10mm</li> <li>• 400µm (2mm optional)</li> <li>• 100µm (150µm paste height)</li> <li>• Possible</li> </ul> </td> </tr> <tr> <td>Max. Inspection Height</td> <td colspan="3"> <ul style="list-style-type: none"> <li>• Automatic</li> <li>• Front / Rear Fixed (factory setting)</li> </ul> </td> </tr> <tr> <td>Min. Distance between PADs</td> <td colspan="3"> <ul style="list-style-type: none"> <li>• Gerber data (274X, 274D), ODB++ (optional)</li> <li>• ePM-SPI</li> <li>• SPC Plus:                             <ul style="list-style-type: none"> <li>- Histogram, X-bar &amp; R-Chart, X-bar &amp; S-Chart, Cp &amp; Cpk, %Gage R&amp;R</li> <li>- Real Time SPC &amp; Multiple Display</li> <li>- SPC Alarm</li> </ul> </li> <li>• KSMART Remote Monitoring System</li> <li>• Library Station: Size Dependent Library for Inspection Condition Setting</li> <li>• KYCal: Auto Camera Calibration, Auto Illumination Calibration, Auto Height Calibration</li> </ul> </td> </tr> <tr> <td>Various colored PCB Inspection</td> <td colspan="3"> <ul style="list-style-type: none"> <li>• Windows 7 Ultimate 64bit</li> </ul> </td> </tr> <tr> <th style="background-color: #008000; color: white;">PCB Handling</th> <td> <ul style="list-style-type: none"> <li>• Conveyor Width Adjustment</li> <li>• Conveyor Fix Type</li> </ul> </td> </tr> <tr> <th style="background-color: #008000; color: white;">Software</th> <td> <ul style="list-style-type: none"> <li>• Supported Input Format</li> <li>• Programming S/W</li> <li>• Statistical Process Control Tool</li> <li>• Operator User-friendliness</li> <li>• Operating System</li> </ul> </td> </tr> <tr> <th style="background-color: #008000; color: white;">Add-on Solutions</th> <td> <ul style="list-style-type: none"> <li>• 1D &amp; 2D Handy Barcode Reader</li> <li>• 1D &amp; 2D Inline Barcode Reader</li> <li>• Offline Programming Station</li> <li>• Offline SPC Plus Station</li> <li>• Standard Calibration Target</li> <li>• UPS</li> </ul> </td> </tr> </tbody> </table> |                         | 10µm                    | 15µm | 20µm | Camera Resolution | 20×20mm(0.79×0.79 inch) | 30×30mm(1.18×1.18 inch) | 40×40mm(1.57×1.57 inch) | FOV Size | 13.7~43.5 cm <sup>2</sup> /sec (Inspection speed varies by PCB and inspection condition.) |  |  | Full 3D Inspection Speed | 16.2~50.8 cm <sup>2</sup> /sec (Inspection speed varies by PCB and inspection condition.) |  |  | With High Speed Option | 100µm (3.94 mils) | 150µm (5.91 mils) | 200µm (7.87 mils) | Min. Distance between Paste Deposit | <ul style="list-style-type: none"> <li>• 4M Pixel Camera</li> <li>• IR-RGB LED Dome Styled Illumination</li> <li>• 0.37µm</li> <li>• 1µm</li> <li>• 2.5 nano meter (PZT Accuracy)</li> <li>• &lt; 10% at 6σ</li> </ul> |  |  | Camera | <ul style="list-style-type: none"> <li>• 10×10mm</li> <li>• 400µm (2mm optional)</li> <li>• 100µm (150µm paste height)</li> <li>• Possible</li> </ul> |  |  | Illumination | <ul style="list-style-type: none"> <li>• 0.39×0.39 inch</li> <li>• 15.75 mils (78.74 mils optional)</li> <li>• 3.94 mils (5.91 mils paste height)</li> </ul> |  |  | Z Resolution | <ul style="list-style-type: none"> <li>• Automatic</li> <li>• Front / Rear Fixed (factory setting)</li> </ul> |  |  | Height Accuracy (on KY Calibration Target) | <ul style="list-style-type: none"> <li>• Gerber data (274X, 274D), ODB++ (optional)</li> <li>• ePM-SPI</li> <li>• SPC Plus:                             <ul style="list-style-type: none"> <li>- Histogram, X-bar &amp; R-Chart, X-bar &amp; S-Chart, Cp &amp; Cpk, %Gage R&amp;R</li> <li>- Real Time SPC &amp; Multiple Display</li> <li>- SPC Alarm</li> </ul> </li> <li>• KSMART Remote Monitoring System</li> <li>• Library Station: Size Dependent Library for Inspection Condition Setting</li> <li>• KYCal: Auto Camera Calibration, Auto Illumination Calibration, Auto Height Calibration</li> </ul> |  |  | X, Y Accuracy | <ul style="list-style-type: none"> <li>• Windows 7 Ultimate 64bit</li> </ul> |  |  | 01005 Inspection Capacity Gage R&R (±50% tolerance) | <ul style="list-style-type: none"> <li>• KSMART Remote Monitoring System</li> <li>• Warp Compensation</li> <li>• Foreign Material Inspection</li> <li>• Review Station</li> <li>• Closed Loop</li> <li>• Real Color 3D Image Display</li> </ul> |  |  | Max. Inspection Size | <ul style="list-style-type: none"> <li>• 10×10mm</li> <li>• 400µm (2mm optional)</li> <li>• 100µm (150µm paste height)</li> <li>• Possible</li> </ul> |  |  | Max. Inspection Height | <ul style="list-style-type: none"> <li>• Automatic</li> <li>• Front / Rear Fixed (factory setting)</li> </ul> |  |  | Min. Distance between PADs | <ul style="list-style-type: none"> <li>• Gerber data (274X, 274D), ODB++ (optional)</li> <li>• ePM-SPI</li> <li>• SPC Plus:                             <ul style="list-style-type: none"> <li>- Histogram, X-bar &amp; R-Chart, X-bar &amp; S-Chart, Cp &amp; Cpk, %Gage R&amp;R</li> <li>- Real Time SPC &amp; Multiple Display</li> <li>- SPC Alarm</li> </ul> </li> <li>• KSMART Remote Monitoring System</li> <li>• Library Station: Size Dependent Library for Inspection Condition Setting</li> <li>• KYCal: Auto Camera Calibration, Auto Illumination Calibration, Auto Height Calibration</li> </ul> |  |  | Various colored PCB Inspection | <ul style="list-style-type: none"> <li>• Windows 7 Ultimate 64bit</li> </ul> |  |  | PCB Handling | <ul style="list-style-type: none"> <li>• Conveyor Width Adjustment</li> <li>• Conveyor Fix Type</li> </ul> | Software | <ul style="list-style-type: none"> <li>• Supported Input Format</li> <li>• Programming S/W</li> <li>• Statistical Process Control Tool</li> <li>• Operator User-friendliness</li> <li>• Operating System</li> </ul> | Add-on Solutions | <ul style="list-style-type: none"> <li>• 1D &amp; 2D Handy Barcode Reader</li> <li>• 1D &amp; 2D Inline Barcode Reader</li> <li>• Offline Programming Station</li> <li>• Offline SPC Plus Station</li> <li>• Standard Calibration Target</li> <li>• UPS</li> </ul> |
|   | 10µm  | 15µm                    | 20µm                    |      |      |                   |                         |                         |                         |          |   |  |  |                          |   |  |  |                        |                   |                   |                   |                                     |  |  |  |        |   |  |  |              |  |  |  |              |   |  |  |  |  |  |  |               |  |  |  |   |   |  |  |                      |   |  |  |                        |   |  |  |                            |  |  |  |                                |  |  |  |              |  |          |   |                  |  |
| Camera Resolution                                   | 20×20mm(0.79×0.79 inch)   | 30×30mm(1.18×1.18 inch) | 40×40mm(1.57×1.57 inch) |      |      |                   |                         |                         |                         |          |   |  |  |                          |   |  |  |                        |                   |                   |                   |                                     |  |  |  |        |   |  |  |              |  |  |  |              |   |  |  |  |  |  |  |               |  |  |  |   |   |  |  |                      |   |  |  |                        |   |  |  |                            |  |  |  |                                |  |  |  |              |  |          |   |                  |  |
| FOV Size  | 13.7~43.5 cm <sup>2</sup> /sec (Inspection speed varies by PCB and inspection condition.)   |                         |                         |      |      |                   |                         |                         |                         |          |   |  |  |                          |   |  |  |                        |                   |                   |                   |                                     |  |  |  |        |   |  |  |              |  |  |  |              |   |  |  |  |  |  |  |               |  |  |  |   |   |  |  |                      |   |  |  |                        |   |  |  |                            |  |  |  |                                |  |  |  |              |  |          |   |                  |  |
| Full 3D Inspection Speed                            | 16.2~50.8 cm <sup>2</sup> /sec (Inspection speed varies by PCB and inspection condition.)   |                         |                         |      |      |                   |                         |                         |                         |          |   |  |  |                          |   |  |  |                        |                   |                   |                   |                                     |  |  |  |        |   |  |  |              |  |  |  |              |   |  |  |  |  |  |  |               |  |  |  |   |   |  |  |                      |   |  |  |                        |   |  |  |                            |  |  |  |                                |  |  |  |              |  |          |   |                  |  |
| With High Speed Option                              | 100µm (3.94 mils)   | 150µm (5.91 mils)       | 200µm (7.87 mils)       |      |      |                   |                         |                         |                         |          |   |  |  |                          |   |  |  |                        |                   |                   |                   |                                     |  |  |  |        |   |  |  |              |  |  |  |              |   |  |  |  |  |  |  |               |  |  |  |   |   |  |  |                      |   |  |  |                        |   |  |  |                            |  |  |  |                                |  |  |  |              |  |          |   |                  |  |
| Min. Distance between Paste Deposit                 | <ul style="list-style-type: none"> <li>• 4M Pixel Camera</li> <li>• IR-RGB LED Dome Styled Illumination</li> <li>• 0.37µm</li> <li>• 1µm</li> <li>• 2.5 nano meter (PZT Accuracy)</li> <li>• &lt; 10% at 6σ</li> </ul>  |                         |                         |      |      |                   |                         |                         |                         |          |   |  |  |                          |   |  |  |                        |                   |                   |                   |                                     |  |  |  |        |   |  |  |              |  |  |  |              |   |  |  |  |  |  |  |               |  |  |  |   |   |  |  |                      |   |  |  |                        |   |  |  |                            |  |  |  |                                |  |  |  |              |  |          |   |                  |  |
| Camera  | <ul style="list-style-type: none"> <li>• 10×10mm</li> <li>• 400µm (2mm optional)</li> <li>• 100µm (150µm paste height)</li> <li>• Possible</li> </ul>   |                         |                         |      |      |                   |                         |                         |                         |          |   |  |  |                          |   |  |  |                        |                   |                   |                   |                                     |  |  |  |        |   |  |  |              |  |  |  |              |   |  |  |  |  |  |  |               |  |  |  |   |   |  |  |                      |   |  |  |                        |   |  |  |                            |  |  |  |                                |  |  |  |              |  |          |   |                  |  |
| Illumination  | <ul style="list-style-type: none"> <li>• 0.39×0.39 inch</li> <li>• 15.75 mils (78.74 mils optional)</li> <li>• 3.94 mils (5.91 mils paste height)</li> </ul>  |                         |                         |      |      |                   |                         |                         |                         |          |   |  |  |                          |   |  |  |                        |                   |                   |                   |                                     |  |  |  |        |   |  |  |              |  |  |  |              |   |  |  |  |  |  |  |               |  |  |  |   |   |  |  |                      |   |  |  |                        |   |  |  |                            |  |  |  |                                |  |  |  |              |  |          |   |                  |  |
| Z Resolution  | <ul style="list-style-type: none"> <li>• Automatic</li> <li>• Front / Rear Fixed (factory setting)</li> </ul>   |                         |                         |      |      |                   |                         |                         |                         |          |   |  |  |                          |   |  |  |                        |                   |                   |                   |                                     |  |  |  |        |   |  |  |              |  |  |  |              |   |  |  |  |  |  |  |               |  |  |  |   |   |  |  |                      |   |  |  |                        |   |  |  |                            |  |  |  |                                |  |  |  |              |  |          |   |                  |  |
| Height Accuracy (on KY Calibration Target)          | <ul style="list-style-type: none"> <li>• Gerber data (274X, 274D), ODB++ (optional)</li> <li>• ePM-SPI</li> <li>• SPC Plus:                             <ul style="list-style-type: none"> <li>- Histogram, X-bar &amp; R-Chart, X-bar &amp; S-Chart, Cp &amp; Cpk, %Gage R&amp;R</li> <li>- Real Time SPC &amp; Multiple Display</li> <li>- SPC Alarm</li> </ul> </li> <li>• KSMART Remote Monitoring System</li> <li>• Library Station: Size Dependent Library for Inspection Condition Setting</li> <li>• KYCal: Auto Camera Calibration, Auto Illumination Calibration, Auto Height Calibration</li> </ul>  |                         |                         |      |      |                   |                         |                         |                         |          |   |  |  |                          |   |  |  |                        |                   |                   |                   |                                     |  |  |  |        |   |  |  |              |  |  |  |              |   |  |  |  |  |  |  |               |  |  |  |   |   |  |  |                      |   |  |  |                        |   |  |  |                            |  |  |  |                                |  |  |  |              |  |          |   |                  |  |
| X, Y Accuracy                                       | <ul style="list-style-type: none"> <li>• Windows 7 Ultimate 64bit</li> </ul>  |                         |                         |      |      |                   |                         |                         |                         |          |   |  |  |                          |   |  |  |                        |                   |                   |                   |                                     |  |  |  |        |   |  |  |              |  |  |  |              |   |  |  |  |  |  |  |               |  |  |  |   |   |  |  |                      |   |  |  |                        |   |  |  |                            |  |  |  |                                |  |  |  |              |  |          |   |                  |  |
| 01005 Inspection Capacity Gage R&R (±50% tolerance) | <ul style="list-style-type: none"> <li>• KSMART Remote Monitoring System</li> <li>• Warp Compensation</li> <li>• Foreign Material Inspection</li> <li>• Review Station</li> <li>• Closed Loop</li> <li>• Real Color 3D Image Display</li> </ul>   |                         |                         |      |      |                   |                         |                         |                         |          |   |  |  |                          |   |  |  |                        |                   |                   |                   |                                     |  |  |  |        |   |  |  |              |  |  |  |              |   |  |  |  |  |  |  |               |  |  |  |   |   |  |  |                      |   |  |  |                        |   |  |  |                            |  |  |  |                                |  |  |  |              |  |          |   |                  |  |
| Max. Inspection Size                                | <ul style="list-style-type: none"> <li>• 10×10mm</li> <li>• 400µm (2mm optional)</li> <li>• 100µm (150µm paste height)</li> <li>• Possible</li> </ul>   |                         |                         |      |      |                   |                         |                         |                         |          |   |  |  |                          |   |  |  |                        |                   |                   |                   |                                     |  |  |  |        |   |  |  |              |  |  |  |              |   |  |  |  |  |  |  |               |  |  |  |   |   |  |  |                      |   |  |  |                        |   |  |  |                            |  |  |  |                                |  |  |  |              |  |          |   |                  |  |
| Max. Inspection Height                              | <ul style="list-style-type: none"> <li>• Automatic</li> <li>• Front / Rear Fixed (factory setting)</li> </ul>   |                         |                         |      |      |                   |                         |                         |                         |          |   |  |  |                          |   |  |  |                        |                   |                   |                   |                                     |  |  |  |        |   |  |  |              |  |  |  |              |   |  |  |  |  |  |  |               |  |  |  |   |   |  |  |                      |   |  |  |                        |   |  |  |                            |  |  |  |                                |  |  |  |              |  |          |   |                  |  |
| Min. Distance between PADs                          | <ul style="list-style-type: none"> <li>• Gerber data (274X, 274D), ODB++ (optional)</li> <li>• ePM-SPI</li> <li>• SPC Plus:                             <ul style="list-style-type: none"> <li>- Histogram, X-bar &amp; R-Chart, X-bar &amp; S-Chart, Cp &amp; Cpk, %Gage R&amp;R</li> <li>- Real Time SPC &amp; Multiple Display</li> <li>- SPC Alarm</li> </ul> </li> <li>• KSMART Remote Monitoring System</li> <li>• Library Station: Size Dependent Library for Inspection Condition Setting</li> <li>• KYCal: Auto Camera Calibration, Auto Illumination Calibration, Auto Height Calibration</li> </ul>  |                         |                         |      |      |                   |                         |                         |                         |          |   |  |  |                          |   |  |  |                        |                   |                   |                   |                                     |  |  |  |        |   |  |  |              |  |  |  |              |   |  |  |  |  |  |  |               |  |  |  |   |   |  |  |                      |   |  |  |                        |   |  |  |                            |  |  |  |                                |  |  |  |              |  |          |   |                  |  |
| Various colored PCB Inspection                      | <ul style="list-style-type: none"> <li>• Windows 7 Ultimate 64bit</li> </ul>  |                         |                         |      |      |                   |                         |                         |                         |          |   |  |  |                          |   |  |  |                        |                   |                   |                   |                                     |  |  |  |        |   |  |  |              |  |  |  |              |   |  |  |  |  |  |  |               |  |  |  |   |   |  |  |                      |   |  |  |                        |   |  |  |                            |  |  |  |                                |  |  |  |              |  |          |   |                  |  |
| PCB Handling  | <ul style="list-style-type: none"> <li>• Conveyor Width Adjustment</li> <li>• Conveyor Fix Type</li> </ul>  |                         |                         |      |      |                   |                         |                         |                         |          |   |  |  |                          |   |  |  |                        |                   |                   |                   |                                     |  |  |  |        |   |  |  |              |  |  |  |              |   |  |  |  |  |  |  |               |  |  |  |   |   |  |  |                      |   |  |  |                        |   |  |  |                            |  |  |  |                                |  |  |  |              |  |          |   |                  |  |
| Software  | <ul style="list-style-type: none"> <li>• Supported Input Format</li> <li>• Programming S/W</li> <li>• Statistical Process Control Tool</li> <li>• Operator User-friendliness</li> <li>• Operating System</li> </ul>   |                         |                         |      |      |                   |                         |                         |                         |          |   |  |  |                          |   |  |  |                        |                   |                   |                   |                                     |  |  |  |        |   |  |  |              |  |  |  |              |   |  |  |  |  |  |  |               |  |  |  |   |   |  |  |                      |   |  |  |                        |   |  |  |                            |  |  |  |                                |  |  |  |              |  |          |   |                  |  |
| Add-on Solutions                                    | <ul style="list-style-type: none"> <li>• 1D &amp; 2D Handy Barcode Reader</li> <li>• 1D &amp; 2D Inline Barcode Reader</li> <li>• Offline Programming Station</li> <li>• Offline SPC Plus Station</li> <li>• Standard Calibration Target</li> <li>• UPS</li> </ul>  |                         |                         |      |      |                   |                         |                         |                         |          |   |  |  |                          |   |  |  |                        |                   |                   |                   |                                     |  |  |  |        |   |  |  |              |  |  |  |              |   |  |  |  |  |  |  |               |  |  |  |   |   |  |  |                      |   |  |  |                        |   |  |  |                            |  |  |  |                                |  |  |  |              |  |          |   |                  |  |

※ Above specifications are subject to change without notice.

|                       | M  | L                         | DL   | XL                            |
|-----------------------|--|---------------------------|--|-------------------------------|
| Max. PCB Size         | 330X330mm<br>(13X13 inch)                              | 510X510mm<br>(20X20 inch) | Dual: 510X320mm<br>(20X12.6 inch)<br>Single: 510X580mm<br>(20X22.8 inch) | 850X690mm<br>(33.4X27.1 inch) |
| Min. PCB Size         | 50X50mm<br>(1.97X1.97 inch)                            |                           |  | 70X70mm<br>(2.7X2.7 inch)     |
| PCB Thickness         | 0.4~5mm<br>(0.015~0.20 inch)                           |                           |  | 0.5~8mm<br>(0.02~0.31 inch)   |
| Max. PCB Weight       | Standard: 2kg, Heavy Weight Option: 5kg                |                           |  | 10Kg(22 lbs)                  |
| Machine Weight        | 550Kg(1212 lbs)  | 600Kg(1322 lbs)           | 700Kg(1543 lbs)  | 850Kg(1874 lbs)               |
| Bottom Side Clearance | 50mm(1.97 inch)  |                           |  |                               |
| Supplies              | 200~240VAC, 50/60Hz Single Phase, 5Kgf/cm <sup>2</sup> |                           |  |                               |
| W                     | 820mm(32.2 inch)                                       | 1000mm(39.3 inch)         |  | 1350mm(53.1 inch)             |
| D                     | 1265mm(49.8 inch)                                      | 1265mm(49.8 inch)         | 1445mm(56.9 inch)  | 1445mm(56.9 inch)             |
| H                     | 1627mm(64 inch)  |                           |  |                               |
| F                     | 985mm(38.7 inch)                                       |                           | 1165mm(45.8 inch)  |                               |

