

ASM TX2i and TX2 Compact High Performance Modular Placement System



ASM Siplace TX2i (2017)
8 modules available

ASM Siplace TX2 (2017)
2 modules available

Contact Us:

TEL: +1 416-385-1956

salestor@tekmart.com

Sample Configuration

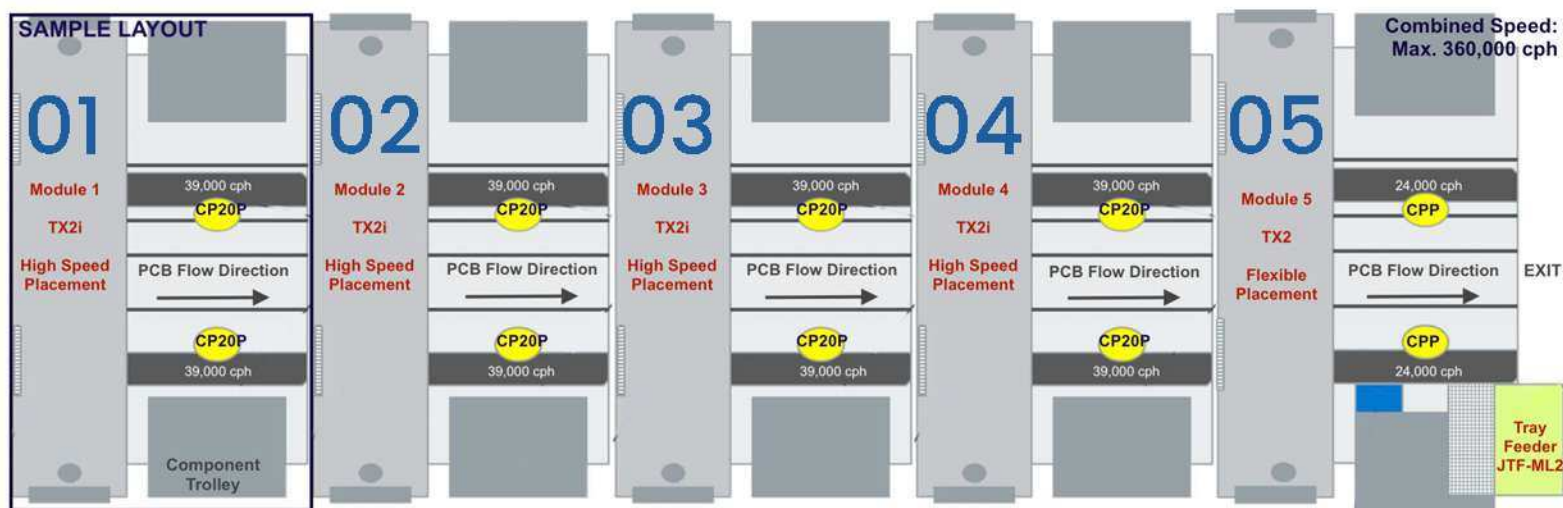
(4) TX2i modules

(1) TX2 module with JTF tray feeder

Combined max speed: 360,000 cph

Floorspace occupied: 5.60 x 2.35 meters

Feeder carriage capacity: 388 x 8mm feeders + up to 18 JEDEC trays



Inventory

Model	Serial Number (Click to Access Photos & Videos)	Vintage	Head 1	Component Camera 1	Board Camera 1	IC Component Camera 1	Head 2	Component Camera 2	Board Camera 2	Hours	Component Count	Options
TX2i	TA859S-12043392	2017	C&P20 P	SST23	SST34	N/A	C&P20 P	SST23	SST34	17778	331728011	
TX2i	TA856S-12043391	2017	C&P20 P	SST23	SST34	N/A	C&P20 P	SST23	SST34	16524	285001535	
TX2i	TA860S-12043392	2017	C&P20 P	SST23	SST34	N/A	C&P20 P	SST23	SST34	14598	222409753	
TX2i	TA855S-12043391	2017	C&P20 P	SST23	SST34	N/A	C&P20 P	SST23	SST34	13686	277129074	
TX2i	TA858S-12043392	2017	C&P20 P	SST23	SST34	N/A	C&P20 P	SST23	SST34	16225	289523312	
TX2i	TA857S-12043392	2017	C&P20 P	SST23	SST34	N/A	C&P20 P	SST23	SST34	16676	303799137	
TX2i	TA853S-12043391	2017	C&P20 P	SST23	SST34	N/A	C&P20 P	SST23	SST34	17056	310256001	
TX2i	TA854S-12043391	2017	C&P20 P	SST23	SST34	N/A	C&P20 P	SST23	SST34	17677	323043882	
TX2	TA719G-12043391	2017	CPP	SST30	SST34	SST33	CPP	SST30	SST34	16893	114843988	JTF-ML2
TX2	TA720G-12043392	2017	CPP	SST30	SST34	SST33	CPP	SST30	SST34	16229	98426062	JTF-ML2

Guaranteed Production-Ready

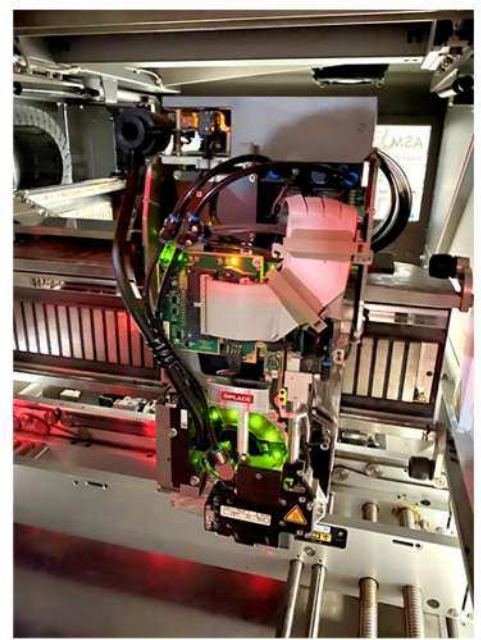
Available in current configuration, or can be custom configured to your specific requirements



Siplace TX2i (2017) – 8 modules available

- Siplace SpeedStar CP20P heads x 2
- Placement speed: 39,000 cph x 2
- Placement accuracy: up to 22 um at 3 sigma
- Component spectrum: 0201 (metric) to 55mm x 45mm
- Max PCB dimension: 375 x 460mm (single mode), 375 x 260mm (dual mode)
- Feeder capacity: 80 x 8mm feeders
- Footprint: 1.00 x 2.23m
- Photos, videos, and CPK reports available

Download technical specifications here
(link: <https://www.dropbox.com/s/v60b63hmsn3yd/Siplace%20TX%20brochure%20%28ver.%202016%29.pdf?dl=0>)



Siplace TX2 (2017) – 2 modules available

- Siplace MultiStar (CPP) heads x 2
- Placement speed: 24,000 cph x 2
- Placement accuracy: up to 22 um at 3 sigma
- Component spectrum: 0201 (metric) to 55mm x 45mm
- Max PCB dimension: 375 x 460mm (single mode), 375 x 260mm (dual mode)
- Feeder capacity: 68 x 8mm feeders + up to 18 JEDEC trays
- Tray feeder unit: JTF-ML2 (up to 18 JEDEC trays available)
- Footprint: 1.00 x 2.35m
- Photos, videos, and CPK reports available

Download technical specifications here

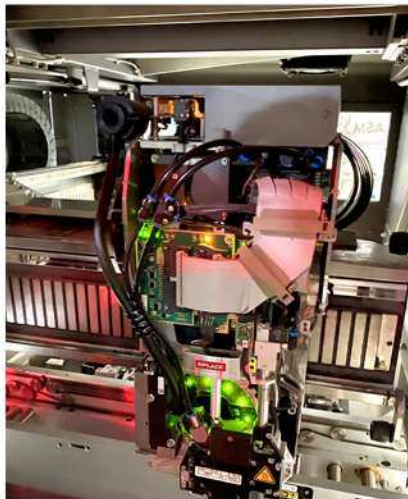
(link: <https://www.dropbox.com/s/v60b63hmsnjn3yd/Siplace%20TX%20brochure%20%28ver.%202016%29.pdf?dl=0>)

SmartFeeder X

Part Number	Size	Compatibility	Splice Sensor	Y.O.M.
00141269-04	2x8mm	X/SX/TX	No	2017
00141371-04	12mm	X/SX/TX	No	2017
00141372-04	16mm	X/SX/TX	No	2017
00141373-01	24mm	X/SX/TX	No	2017
00141374-01	32mm	X/SX/TX	No	2017

Component Trolley

Part Number	Description	Compatibility	Capacity	Y.O.M.
00588107-xx	Component Trolley	TX	80 x 8mm feeder	2017



We carry a wide range of pre-owned Siplace Smart Feeders. For other sizes and models, please contact us

+1 416-385-1956 | salestor@tekmart.com | Call Us Today